



GANGED COLUMN FORMS



AL-SPEED®



MULTI-CHANNEL

Atlas offers AL-SPEED® aluminum and Atlas Multi-Channel high strength, adjustable column form systems. Both systems offer the advantages of producing an architectural finish and being available on a rental basis. Form skins are generally 3/4" HDO or Finply.

Atlas AL-SPEED® aluminum forms are capable of 36" widths and generally utilized to a height up to 16 ft. They are provided with quick double closures (two piece) or hinged/single closures (one piece).

Atlas Multi-Channel forms are capable of 72" widths and have been used to heights of 45 ft. They are provided with quick swivel barrel assembly double closures. Atlas can offer these pre-assembled and delivered to the jobsite ready to use. In this configuration, the equipment is normally offered on the basis of a job duration lease.

"Contractor Committed"



AL-SPEED[®] ALUMINUM CLAMPS FOR COLUMN AND BEAM FORMING

The AL-SPEED[®] Aluminum Clamp System was designed and developed for maximum utility in concrete column and beam forming applications.

The clamp material is a high strength structural aluminum alloy extrusion. The clamp cross section is rectangular and measures 1-1/2" x 3-1/2" (same as a 2x4 S4S) with a 1" wide integral flange on one side. The flange has 5/16" diameter holes @ 1-1/4" O.C. throughout its length. These holes are for nailing or lagging (1/4" diameter lag bolts) the clamp to form support members. The body of the clamp has 1-1/16" diameter holes @ 2" O.C. to accommodate column sizes from 12" x 12" up to 36" x 36", and 36" deep beams from 10" wide up to 24" wide.

Standard Clamp Sizes:

AL-SPEED[®] 33 Clamp for columns from 14" x 14" up to 24" x 24", and 36" deep beams from 10" up to 24" wide.

AL-SPEED[®] 48 Clamp for columns from 20" x 20" up to 40" x 40".

Clamp Weight:

AL-SPEED[®] 33 Clamp Weight = 11.5 lbs.

Clamp Assembly Types:

- I. Double Closure - Closure assembly on both opposing corners
- II. Hinged - Closure assembly on one corner; hinge on opposite corner
- III. Extended Hinged - Closure assembly and hinge for crane set forming





AL-SPEED® Column Form Photographs:





Double Closure:

2 each

2 each

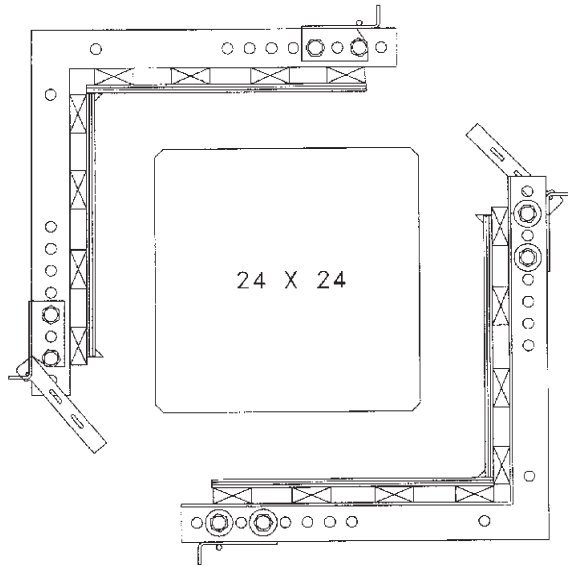
8 each

Closure assembly on both opposing corners

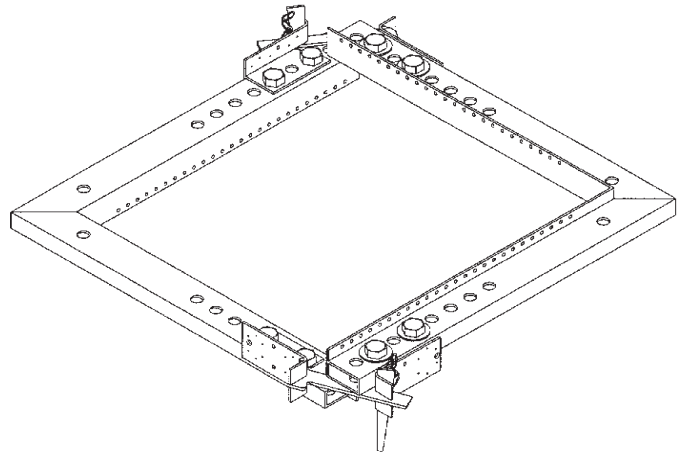
AL-SPEED® clamps (33 or 48)

AL-SPEED® column closure assemblies

1" x 3" M-bolts with hex nut & washers



DOUBLE CLOSURE ASSEMBLY



DOUBLE CLOSURE ASSEMBLY



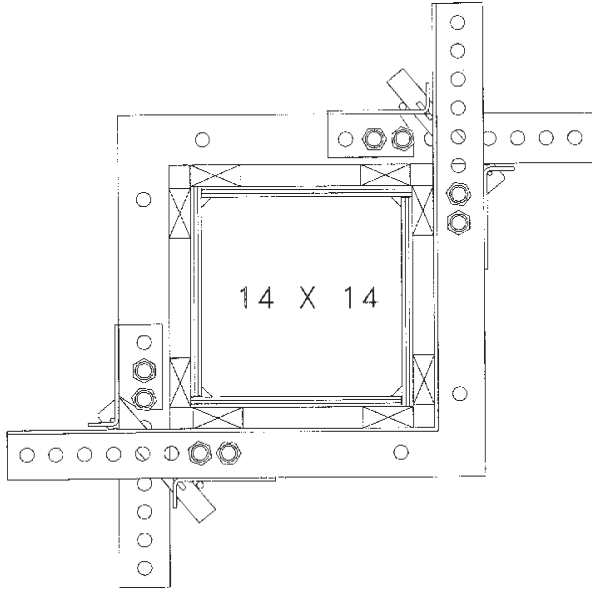
AL-SPEED® COLUMN FORM



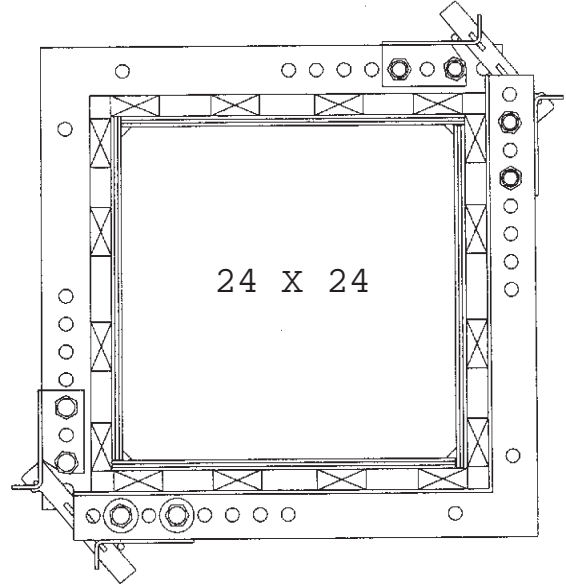
AL-SPEED® COLUMN FORM



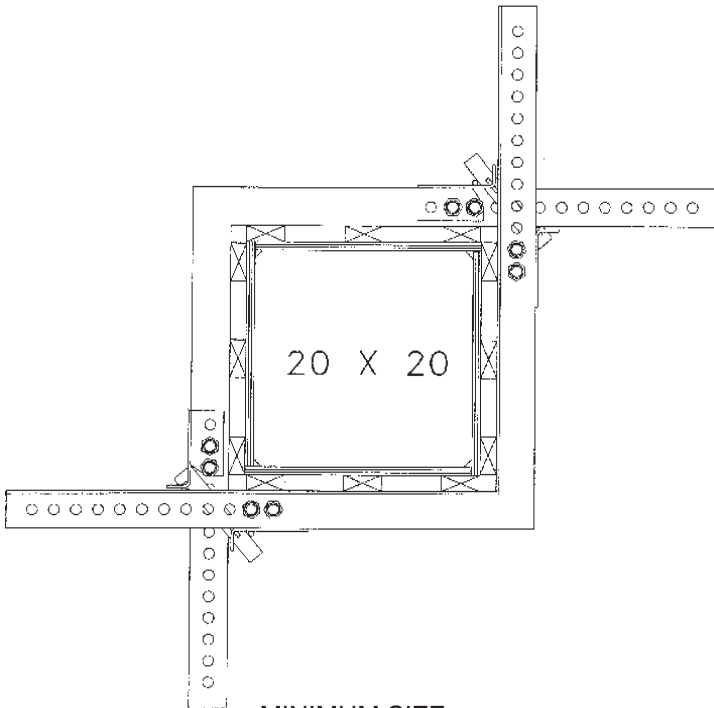
Double Closure:



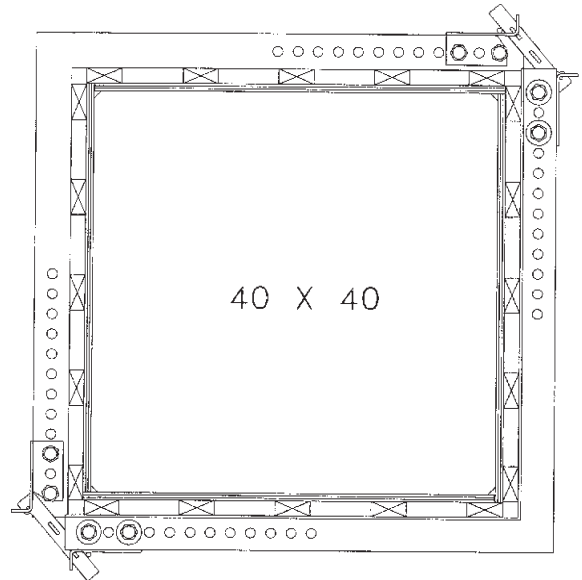
MINIMUM SIZE
DOUBLE-CLOSURE COLUMN FORM
USING AL-SPEED® 33 CLAMPS
AND 2X4 FLAT



MAXIMUM SIZE
DOUBLE-CLOSURE COLUMN FORM
USING AL-SPEED® 33 CLAMPS
AND 2X4 FLAT



MINIMUM SIZE
DOUBLE-CLOSURE COLUMN FORM
USING AL-SPEED® 48 CLAMPS
AND 2X4 FLAT



MAXIMUM SIZE
DOUBLE-CLOSURE COLUMN FORM
USING AL-SPEED® 48 CLAMPS
AND 2X4 FLAT



Hinged:

Closure assembly and hinge for crane set forming

2 each

AL-SPEED® clamps (33 or 48)

1 each

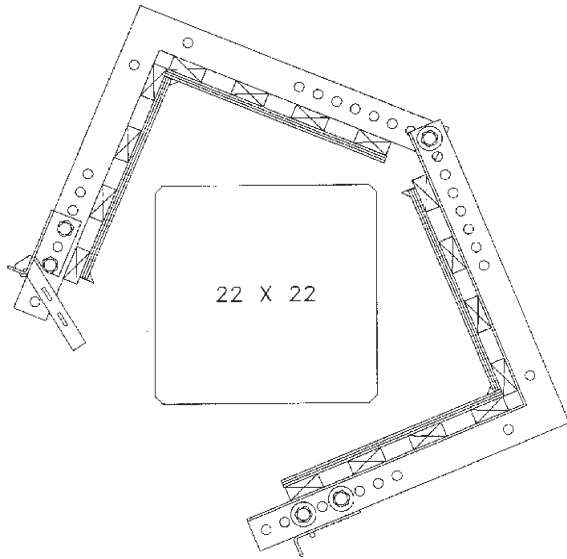
AL-SPEED® column closure assembly

1 each

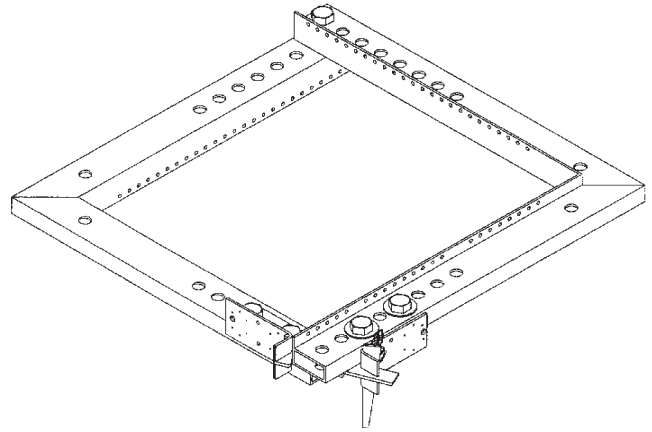
1" x 4 1/2" hinge M-bolts with hex nut & washers

4 each

1" x 3" M-bolts with hex nut & washers



HINGED COLUMN FORM



AL-SPEED® COLUMN CLAMP: HINGED



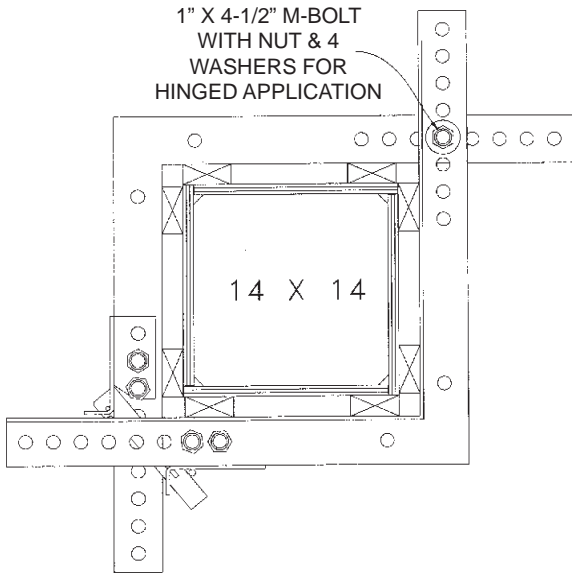
AL-SPEED® COLUMN CLAMP: HINGED



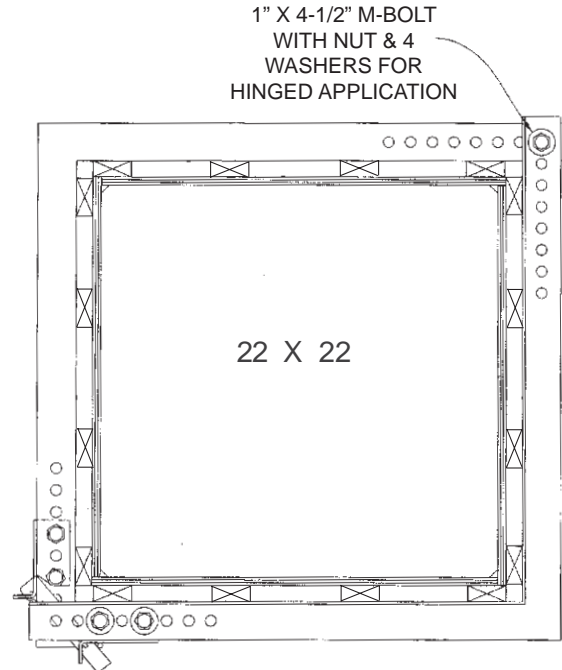
AL-SPEED® COLUMN CLAMP: HINGED



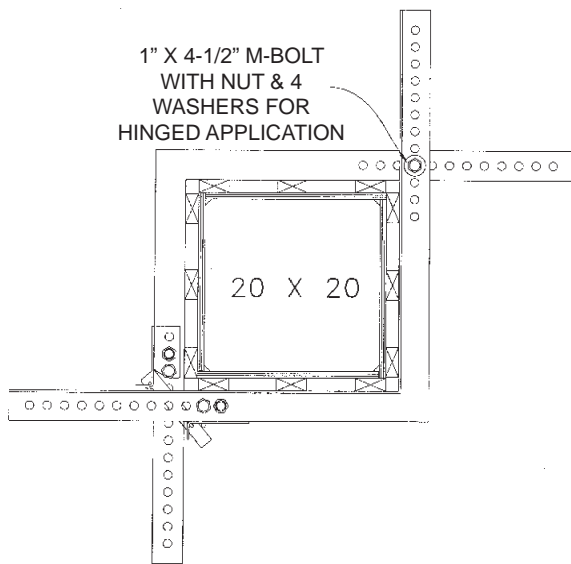
Hinged:



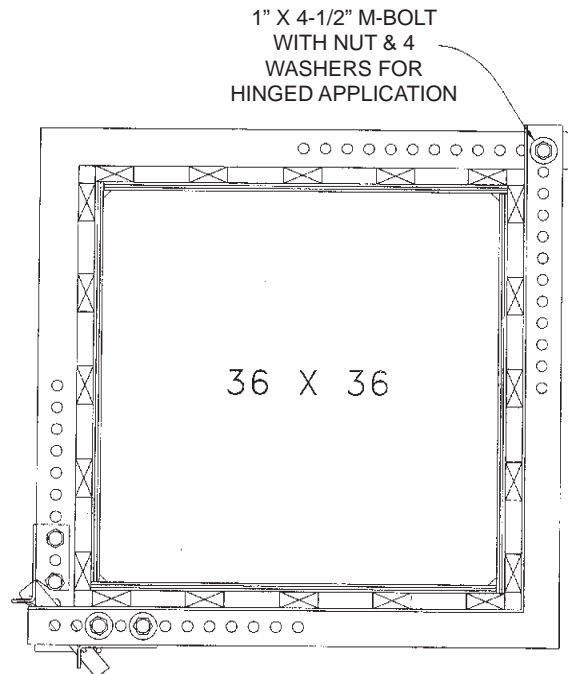
MINIMUM SIZE HINGED COLUMN FORM USING AL-SPEED® 33 CLAMPS AND 2X4 FLAT



MAXIMUM SIZE HINGED COLUMN FORM USING AL-SPEED® 33 CLAMPS AND 2X4 FLAT



MINIMUM SIZE HINGED COLUMN FORM USING AL-SPEED® 48 CLAMPS AND 2X4 FLAT



MAXIMUM SIZE HINGED COLUMN FORM USING AL-SPEED® 48 CLAMPS AND 2X4 FLAT



Extended Hinged:

Closure assembly and hinge for crane set forming

2 each

AL-SPEED® clamps (33 or 48)

1 each

AL-SPEED® column closure assembly

1 each

1" x 6" hinge M-bolts with hex nut & washers

4 each

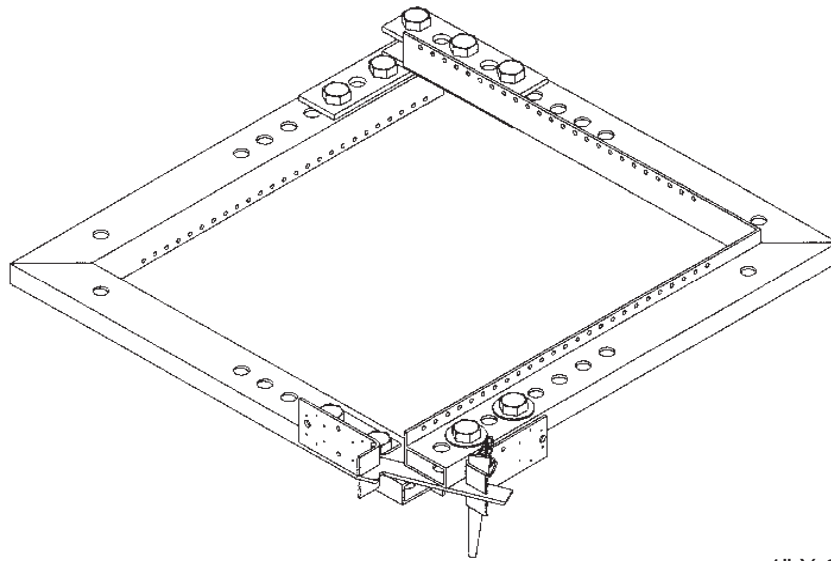
Extended Hinge Plates

4 each

1" x 3" M-bolts with hex nut & washers

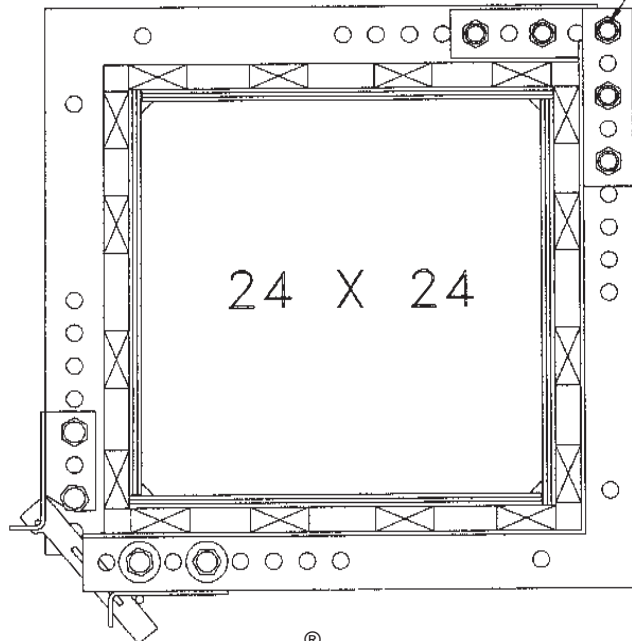
4 each

1" x 4-1/2" M-bolst with hex nuts



AL-SPEED® COLUMN CLAMP:
EXTENDED HINGED

1" X 6" M-BOLT WITH NUT
& WASHER FOR
EXTENDED HINGE
APPLICATION



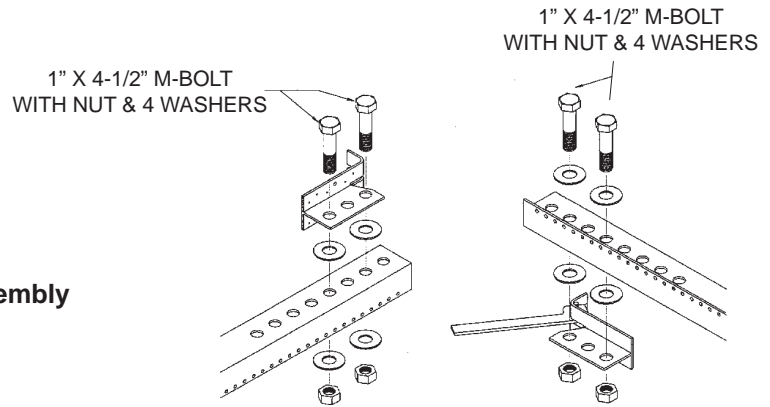
24 X 24

AL-SPEED® COLUMN CLAMP:
EXTENDED HINGED

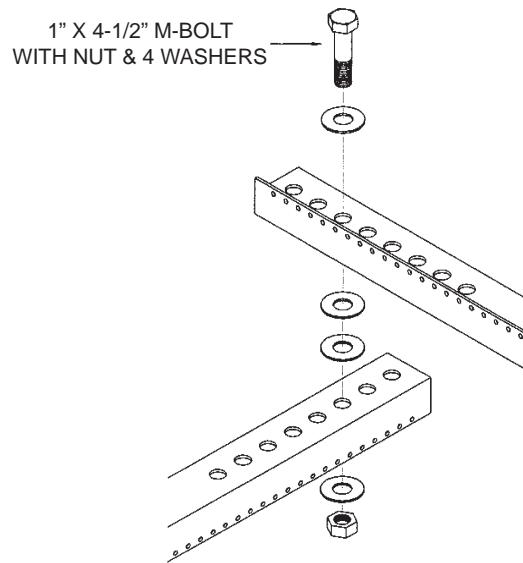


Assemblies:

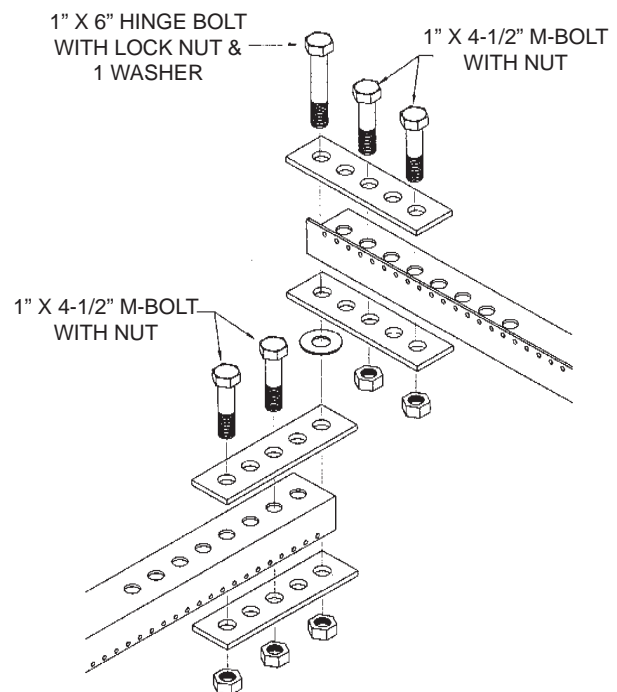
Corner Lock Assembly



Hinged Assembly for Gang-Set Application

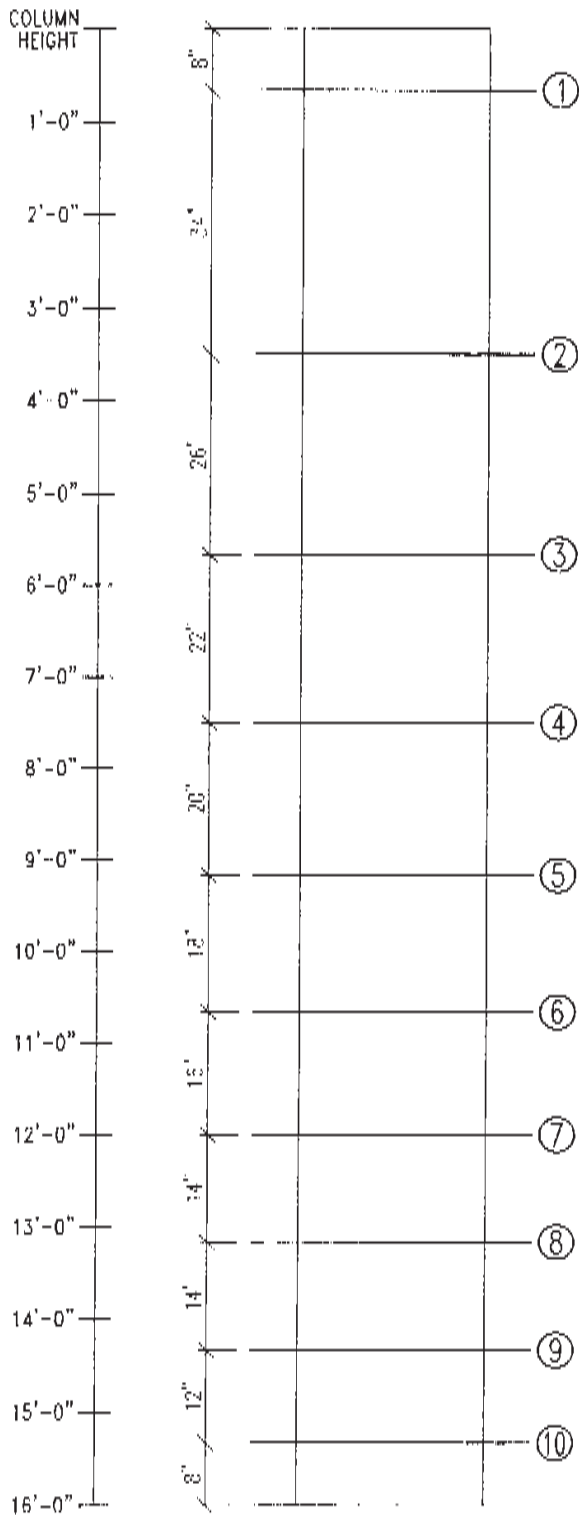


**Hinged Assembly for Gang-Set Application
Extended Hinged**

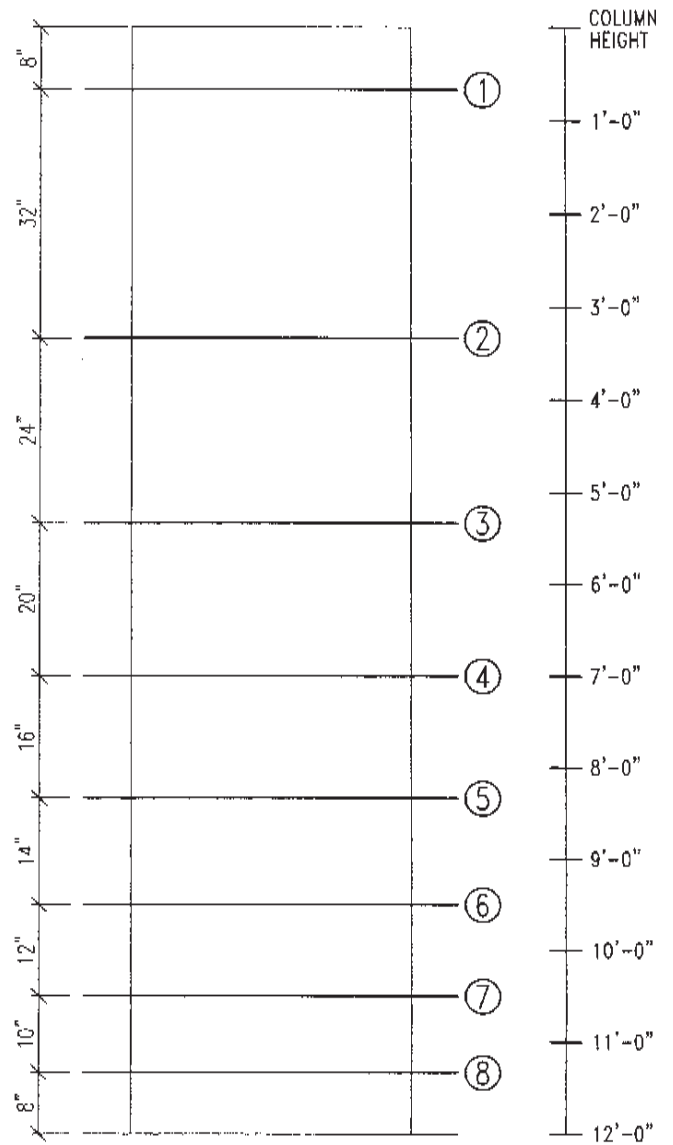




AL-SPEED® Column Clamp Size & Spacing Chart:



24" X 24"
(AL-SPEED® Clamp 33)
(AL-SPEED® Clamp 48)



36" X 36"
(AL-SPEED® Clamp 48)

CHART BASED ON MAX. 2400 PSF CONCRETE PRESSURE
CLAMPS DESIGNED TO SUPPORT 3/4" B-B CLASS 1 PLYWOOD OR BETTER WITH BACK-UP OF CONSTRUCTION GRADE 2X4 FLAT

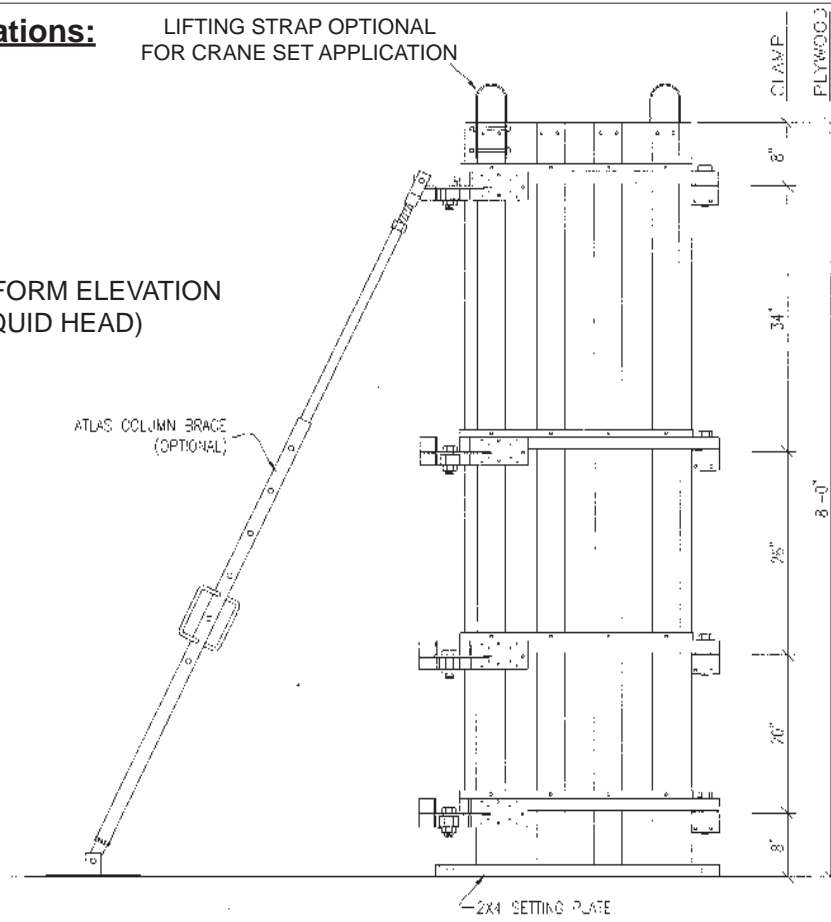
MAX. ALLOWABLE BENDING MOMENT IN CLAMP = 2500 LBS.
MAX. ALLOWABLE RESULTANT CLOSURE LOAD = 3500 LBS. TENSION

	HINGED/EXTENDED HINGED 2 X 4 FLAT	DOUBLE CLOSURE 2 X 4 FLAT
ASC 33 MINIMUM	14" X 14"	14" X 14"
ASC 33 MAXIMUM	24" X 24"	24" X 24"
ASC 48 MINIMUM	20" X 20"	20" X 20"
ASC 48 MAXIMUM	40" X 40"	40" X 40"

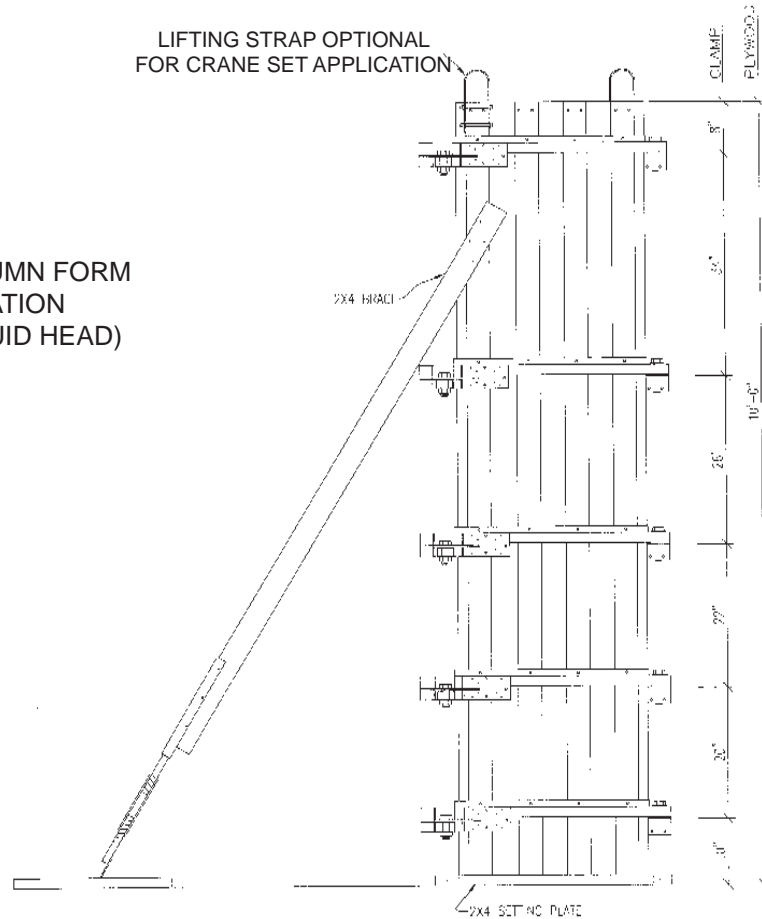


Column Form Elevations:

8 FT COLUMN FORM ELEVATION
(FULL LIQUID HEAD)



10 FT COLUMN FORM ELEVATION
(FULL LIQUID HEAD)



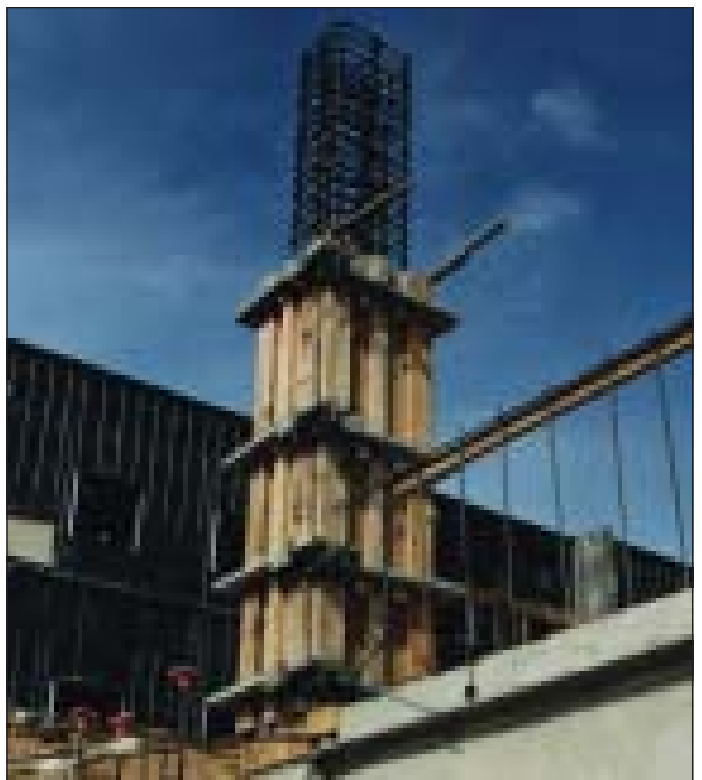


AL-SPEED® Column Form Photographs:





AL-SPEED® Column Form Photographs:





MULTI-CHANNEL STEEL CLAMPS FOR COLUMN AND BEAM FORMING

The Multi-Channel Clamp System was designed and developed for larger and taller concrete column and beam forming applications than the AL-SPEED® Clamp System.

The clamp material is 4" to 6" steel channel pairs and hardware. The body of the clamp has 1-1/16" diameter holes @ 2" O.C. to accommodate column sizes from 12" up to 72". The clamp elements accommodate beams with widths and depths to 48".

Clamp Assembly Types:

- I. Double Closure - Closure assembly on both opposing corners
- II. Hinged - Closure assembly on one corner; hinge on opposite corner



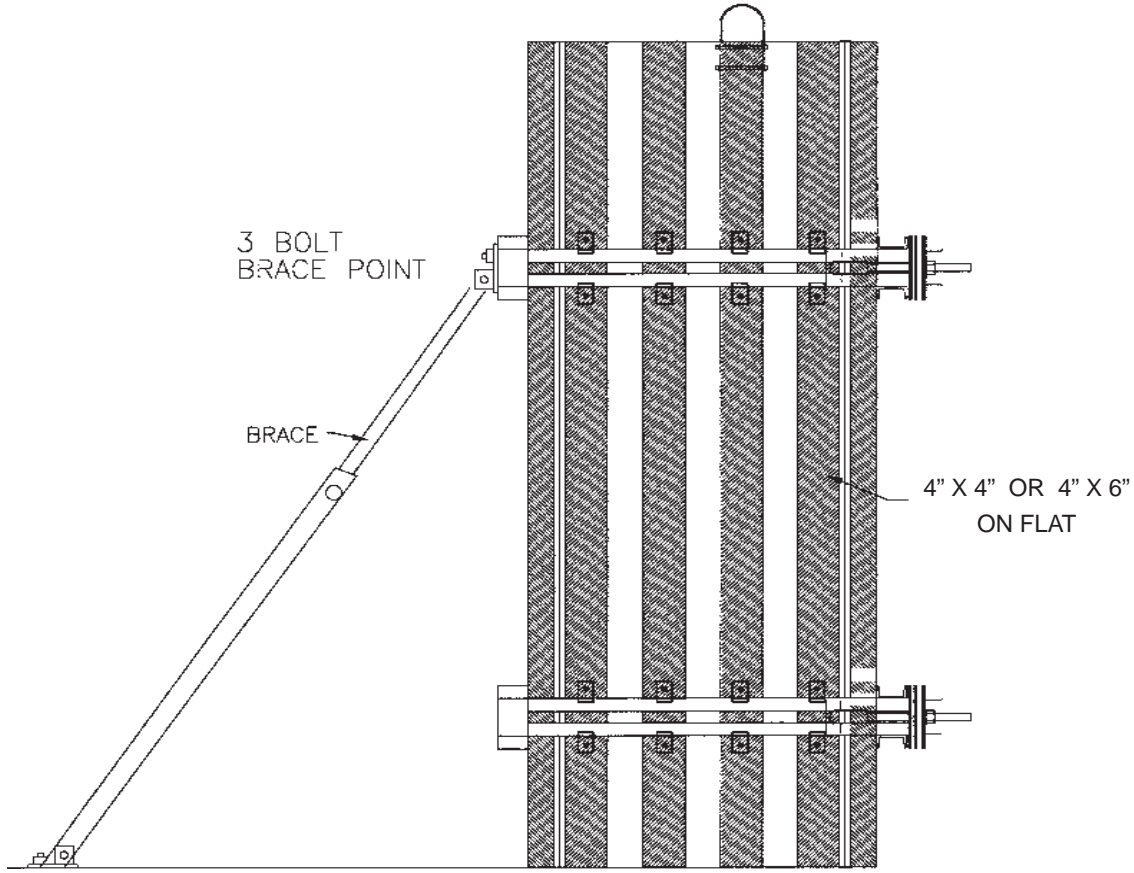


Multi-Channel Photographs:

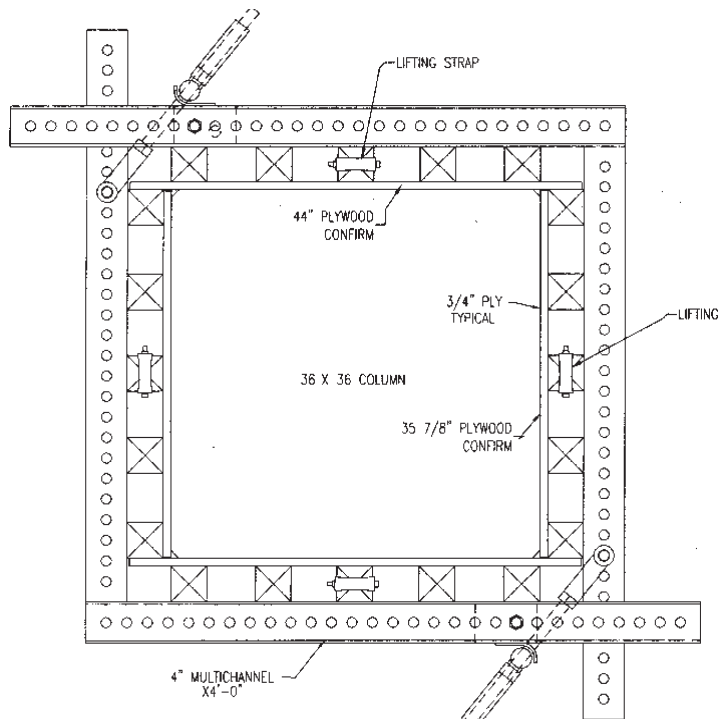




Multi-Channel Diagrams:



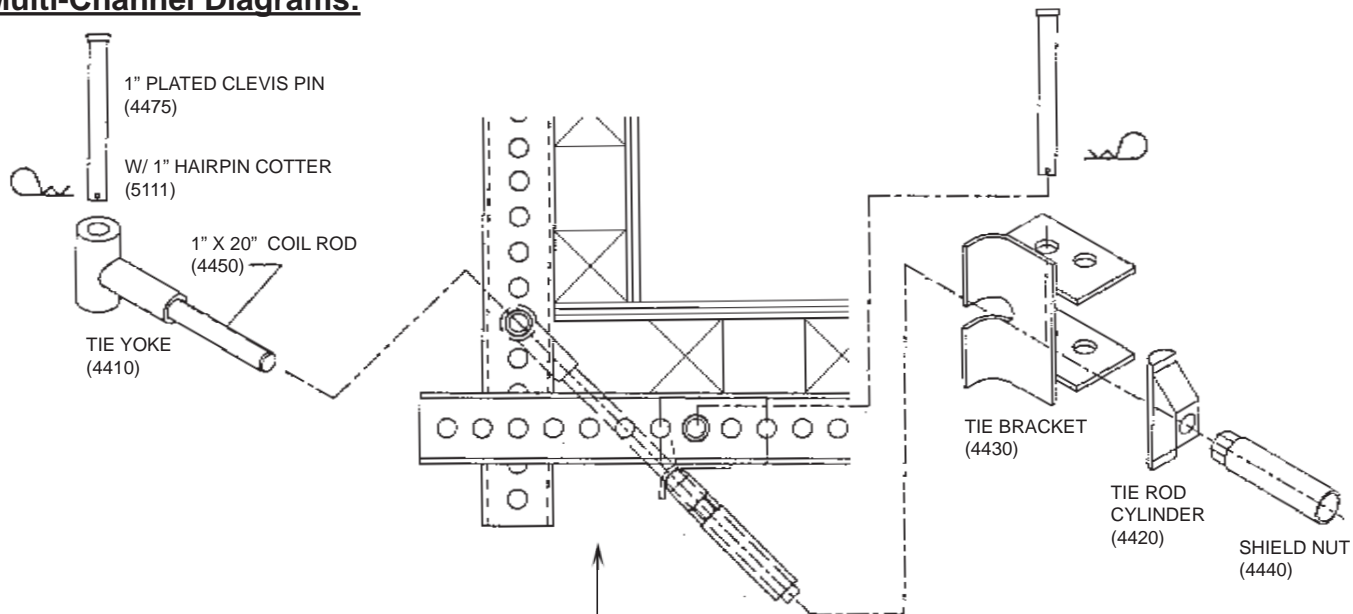
ELEVATION
36" X 36" COLUMN



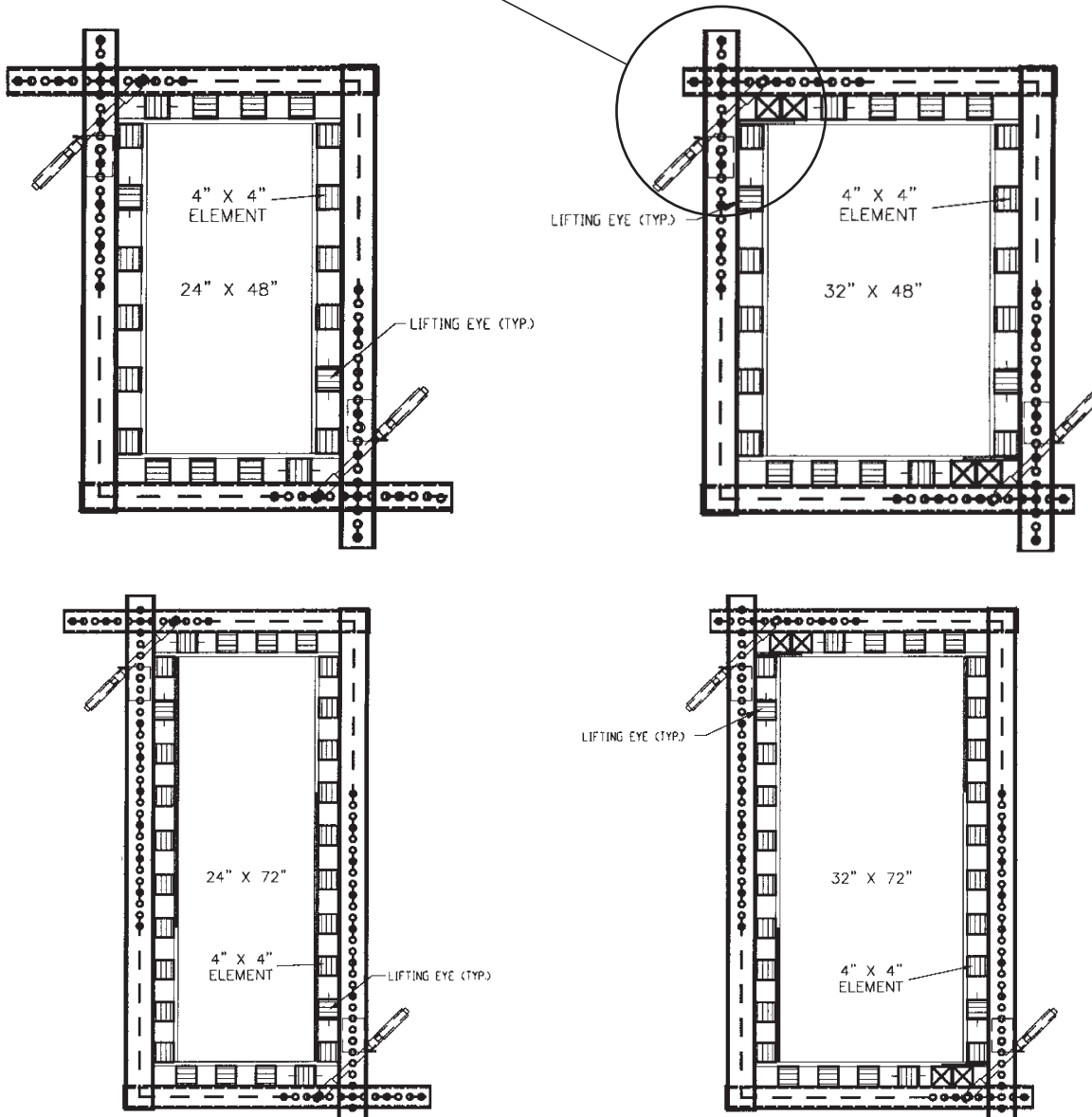
PLAN
36" X 36" COLUMN



Multi-Channel Diagrams:

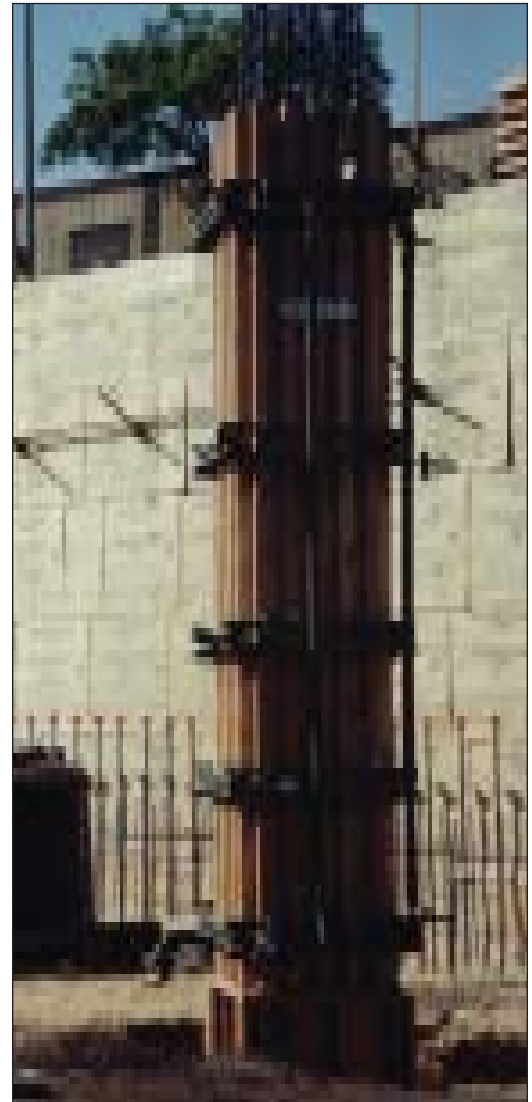


Various Column Dimensions:





Multi-Channel Photographs:





Multi-Channel Photographs:





Corporate Office

**4640 Brinell St.
San Diego, CA 92111
Phone (858) 277-2100
Toll Free 1-877-588-2100
Fax (858) 277-0585**



Branch Locations

**San Diego
(858) 277-2100
1-877-588-2100
fax (858) 277-0585**

**Los Angeles
(562) 595-1006
fax (562) 595-4177**

**Phoenix
(602) 256-0600
fax (602) 256-0687**

**Las Vegas
(702) 227-6800
fax (702) 222-0488**

www.atlasform.com
